

REVISION DATA		
REV	DESCRIPTION	DATE
A0	NEW DRAWING	21-7-10

Technical Data

Material:

Pin(outer sleeve): Brass, machined CuZn38Pb2

Plating(outer sleeve):

Tin Plated: 2µm/80µm Ni, 5µm/200µm Sn

Gold Plated: 2µm/80µm Ni, 0.8µm gold

Plating(Contact): 2µm/80µm Ni, gold or Tin plated

Insulator: PBT UL94V-0

Clip(Contact 4 Flinger): Beryllium copper, heat treated

Electrical:

Current rating: 3Amps/contact max.

Contact resistance: Max. 10MΩ

Dielectric strength: Min. 1000V

Mechanical:

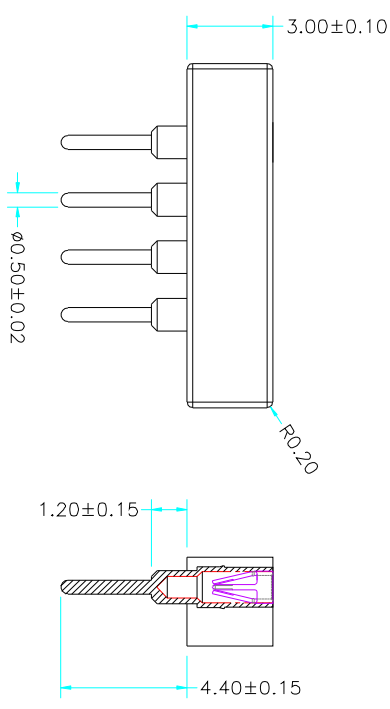
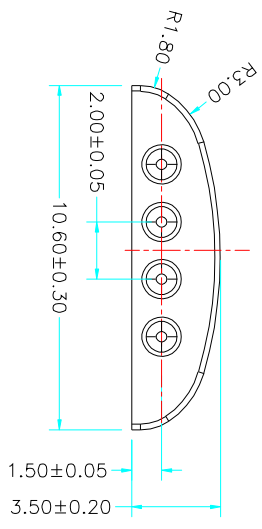
Average Insertion force with steel pin of $\phi 0.432$: < 90g

Average withdrawal force with steel pin of $\phi 0.432$: > 25g

Mechanical ligue: min 500 cycle

Operating temperature: -40° C to +105° C

Soldering temperature: +245° C



P.C.B LAYOUT

QTY	X	X	X	X	X	X	X	X				
Pitch(mm)	A=1.27	B=1.778	C=2.00	D=2.54	P=4.00	Insulator Type code	1=Single row	2=Double row	3=Three row			
Angular Options	D=180°	R=90°	S=SMT	T=IC	No. of Positions	Pin plated	T1=Tin 150µ"	T2=Tin 200µ"	G1=6/7 10µ"	G2=6/6 30µ"	G3=6/6 150µ"	G4=6/6 300µ"
Pin Length Options	0740-F, 40mm	Specifications	A=Public seat	B=Female seat	CLIP plated	T1=Tin 150µ"	T2=Tin 200µ"	G1=6/7	G2=6/6 30µ"	G3=6/6 150µ"	G4=6/6 300µ"	

Dziconn 东莞启之泰电子科技有限公司

启之泰

TOLERANCE	X. XXX ±0.05	PROJECTON		TITLE:	Single row socket connector
	X. XX ±0.15	DATE:	2021-7-10	L=7.40mm 母座	
	X. X ±0.20	DRAWN:	Ribelle	PART NO.:	QZTC1-D04XXX0740B
ANGLE	X. ±0.30	CHECKED:		DRAWING NO.:	2021071001
	X. ±5.0°	APPROVED:		REV:	A1
				UNIT:	mm
				SCALE:	1:1
				SIZE:	A4